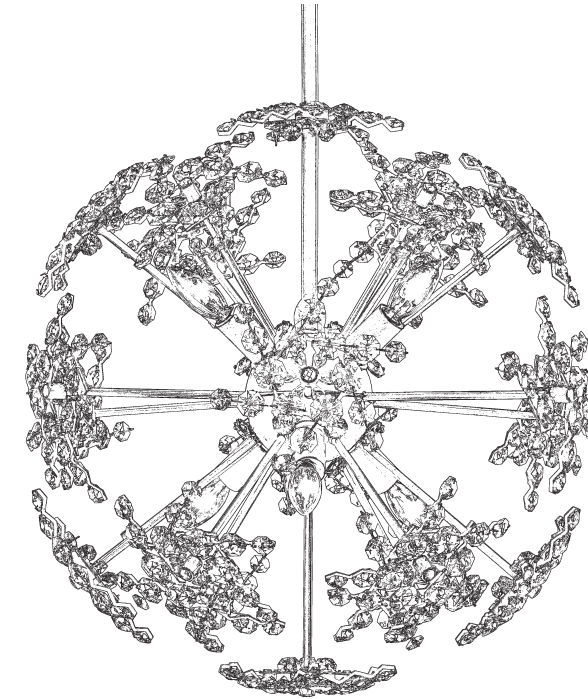




ESTERACAE DN1018N-__ _R



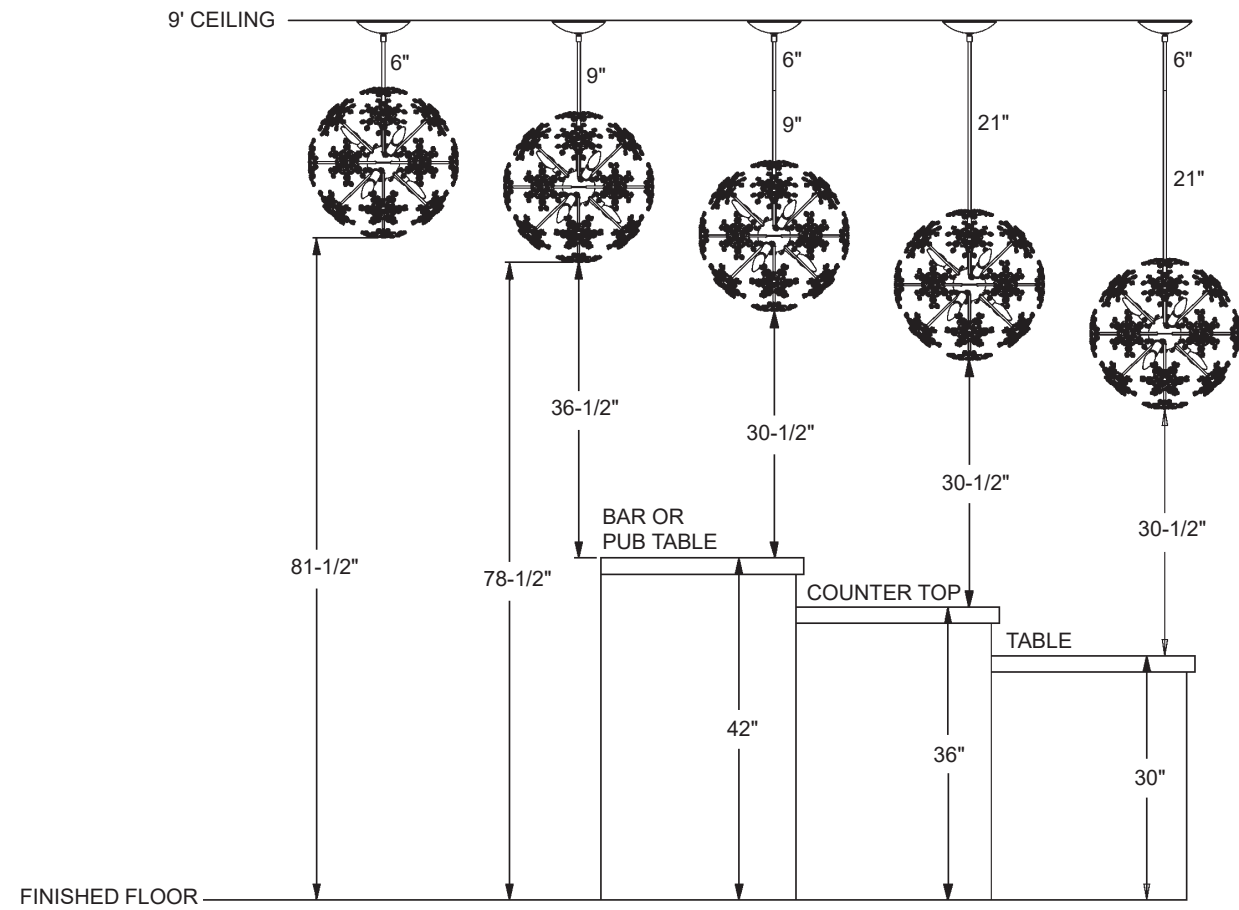
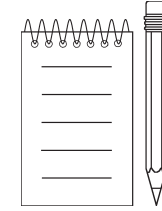
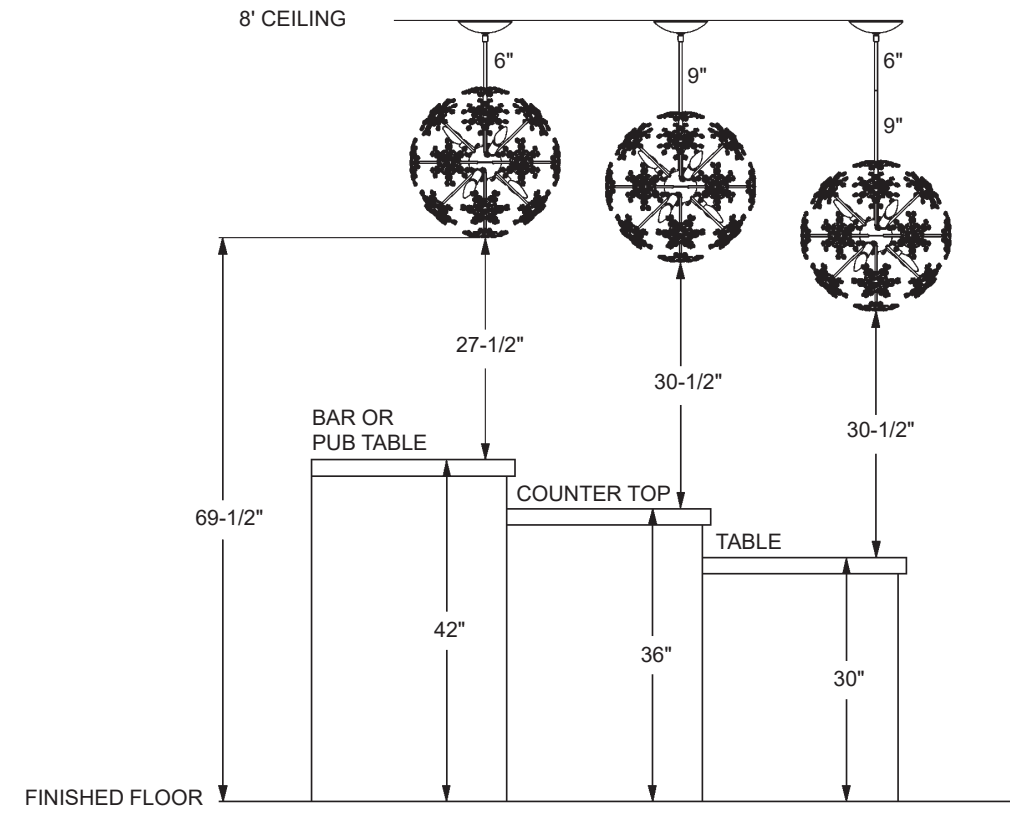
THIS DESIGN IS THE PROPRIETARY
TRADE DRESS/TRADEMARK OF
W SCHONBEK LLC.

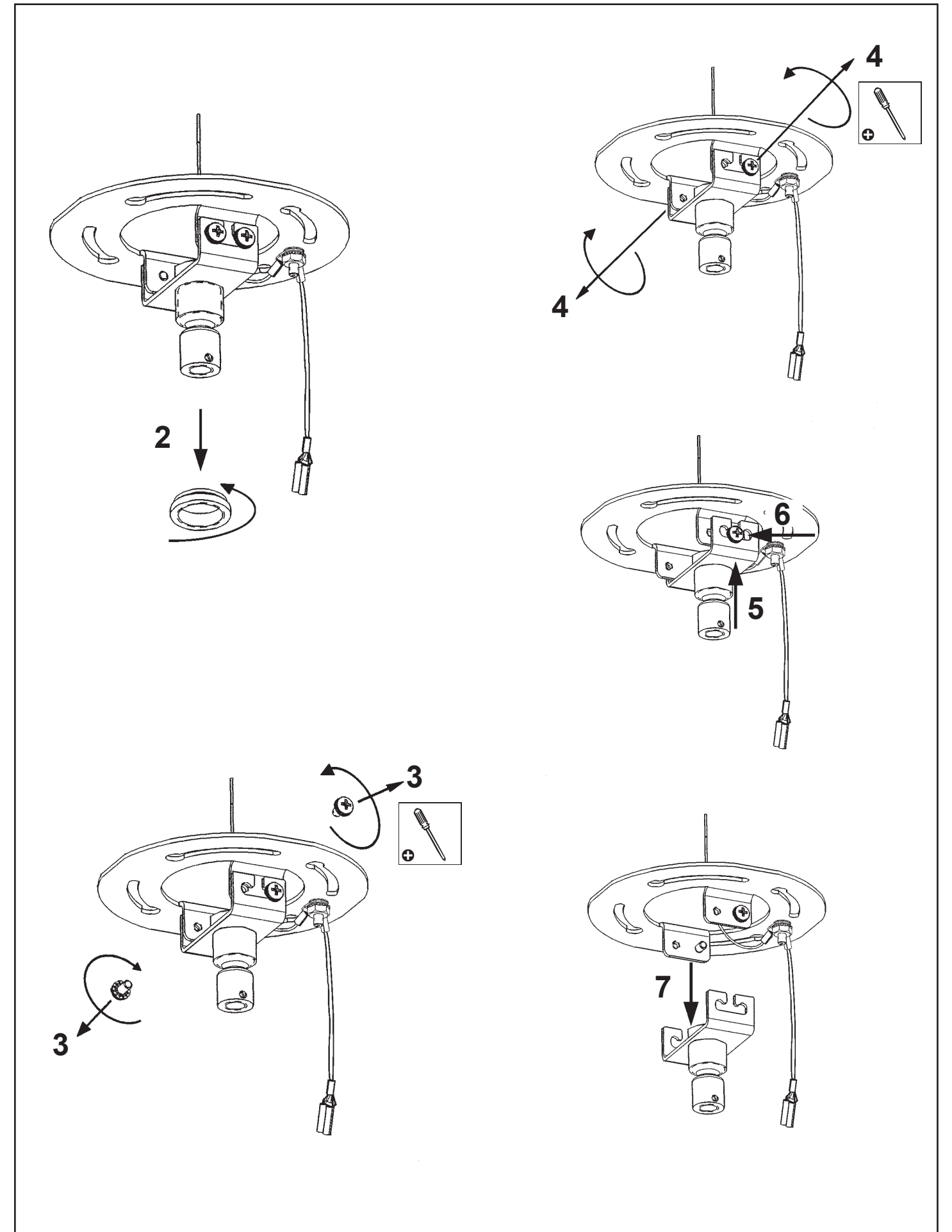
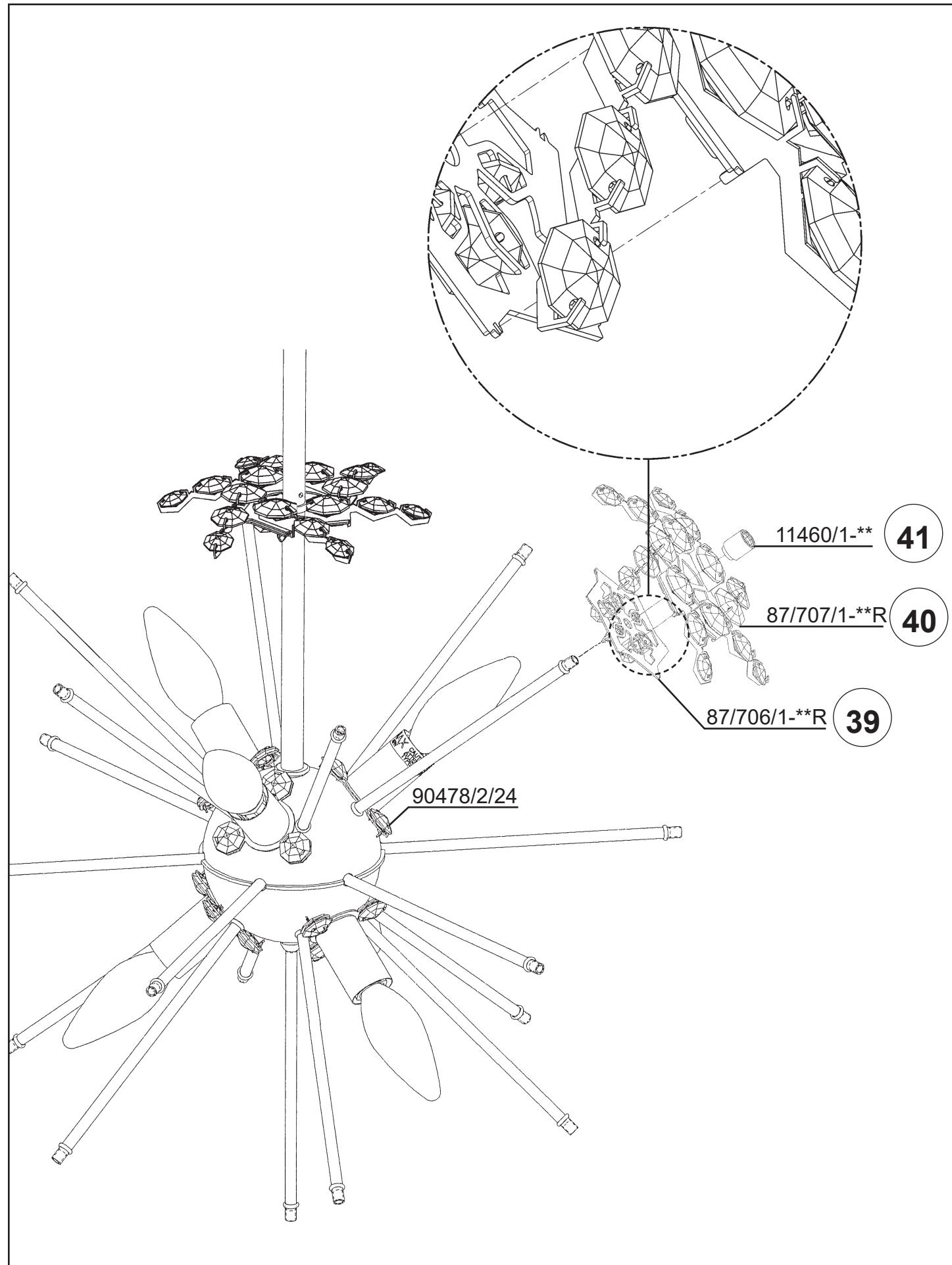
6 Lights
Diameter: 18"
Height: 18"
Hanging Weight: 10lbs.



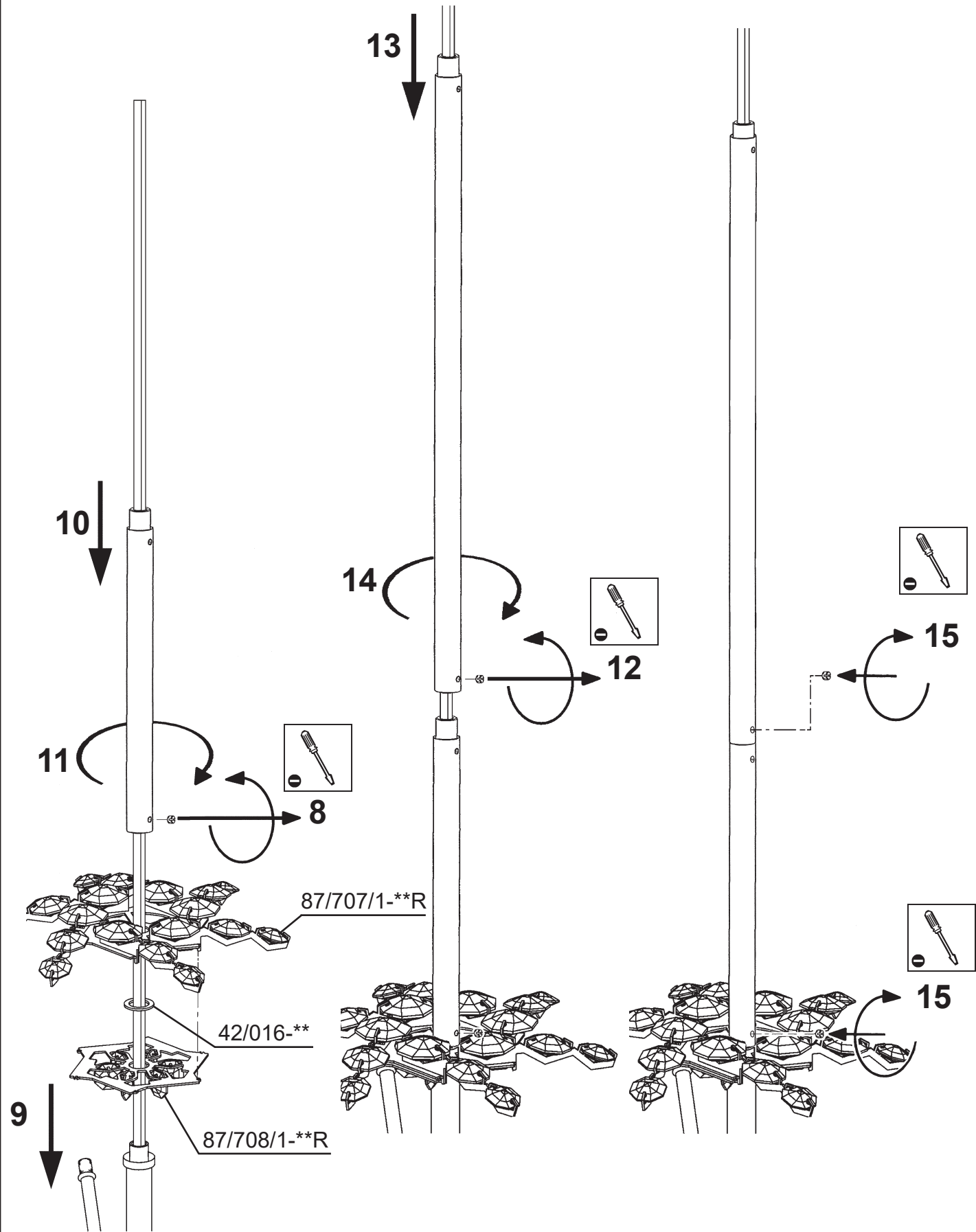
			S				
MAX <u>60</u> W	110-120 V						

1





1 X  : 400/16S



You will need 6 - B10
60 Watts Max

Install bulbs and be sure
to test fixture **BEFORE**
trimming.

