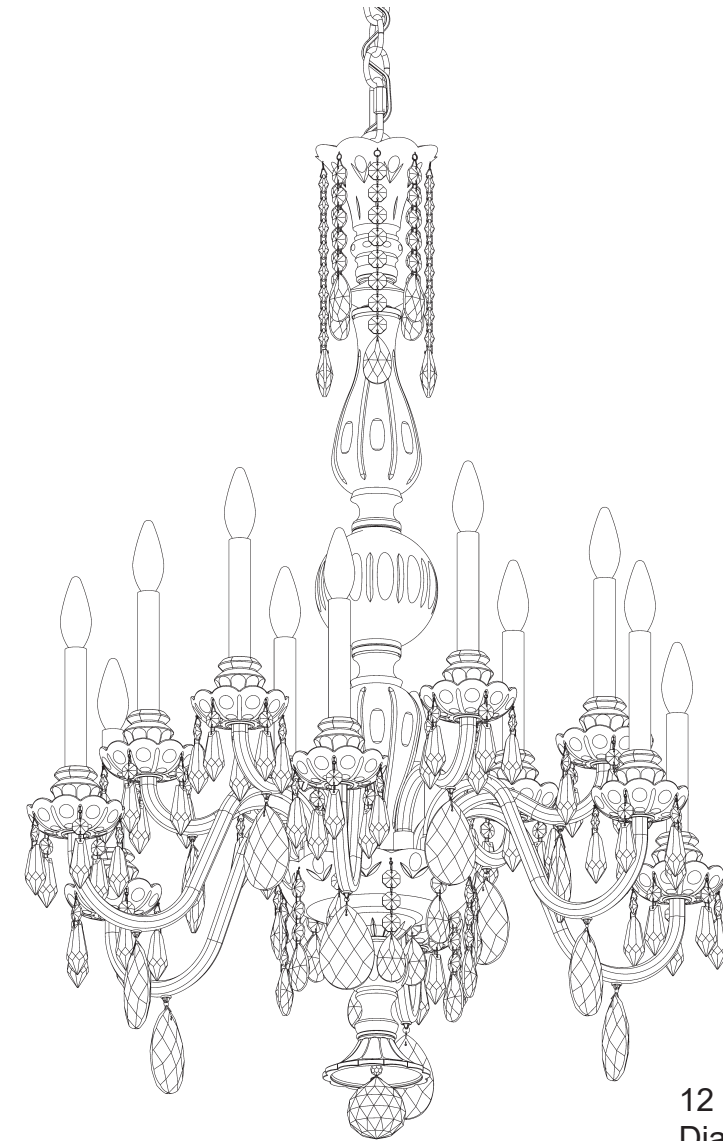


SCHONBEK  
*Circa*  
1870-1930

HANOVER HA5808N- \_\_ \_\_ H



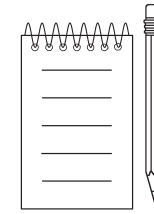
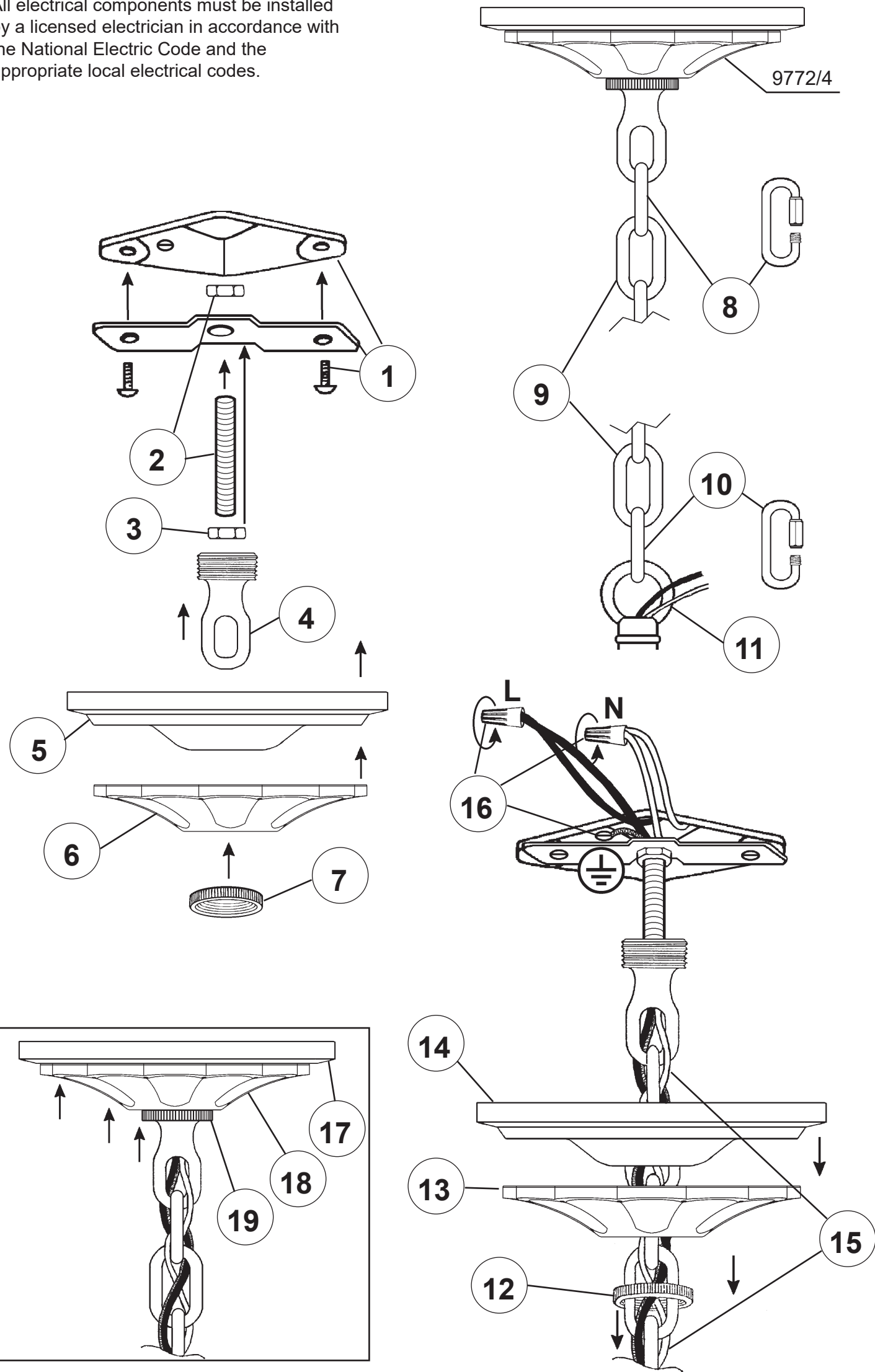
**T**HIS DESIGN IS THE PROPRIETARY  
TRADE DRESS/TRADEMARK OF  
W SCHONBEK LLC.

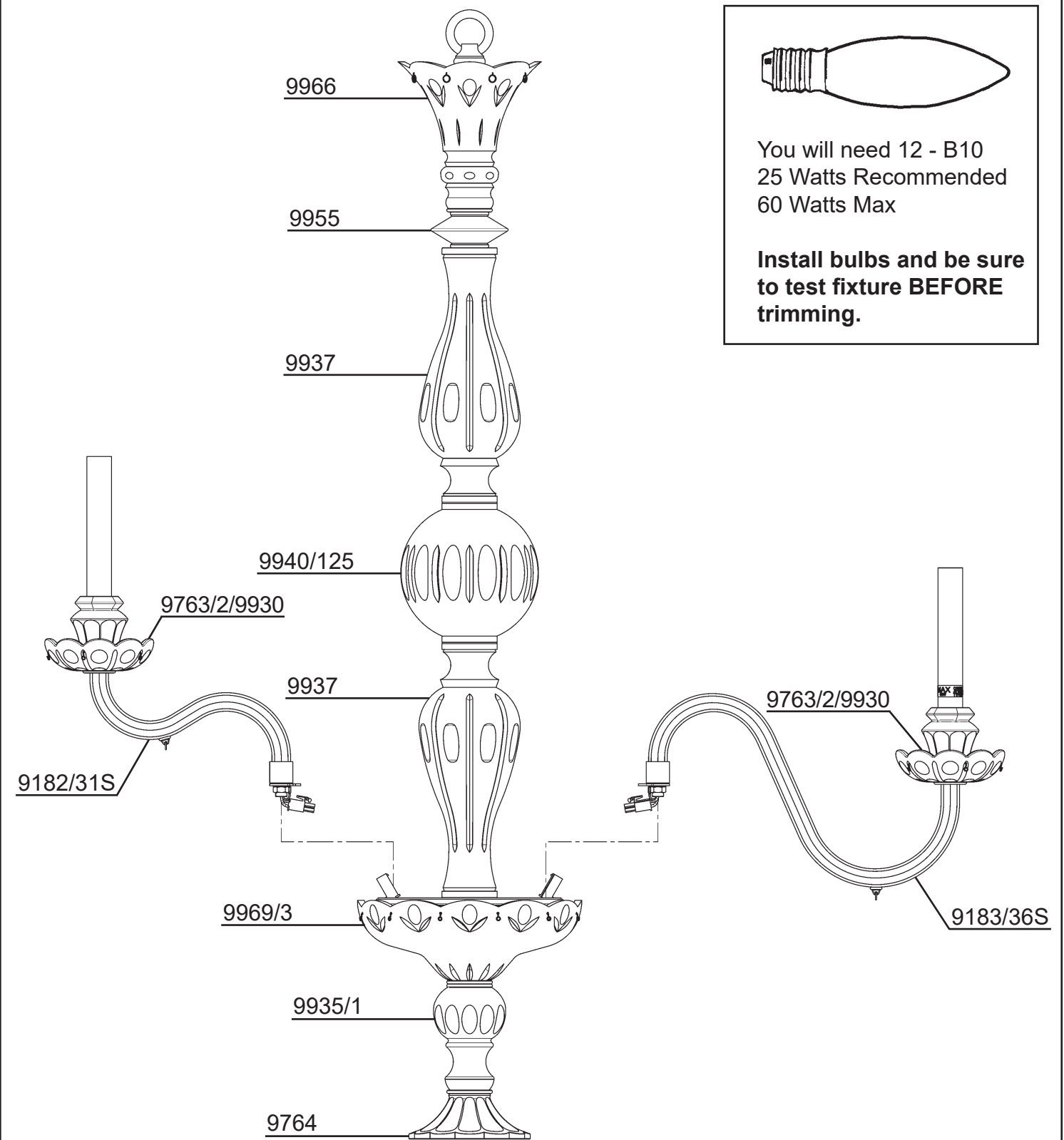
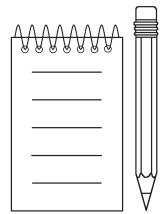
12 Lights  
Diameter: 30"  
Body Length: 44"  
Hanging Weight: 41lbs.

SCHONBEK  
*Circa*  
1870-1930

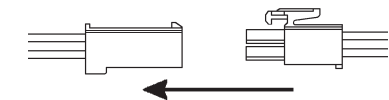
MAX 60 W	110-120 V							

All electrical components must be installed by a licensed electrician in accordance with the National Electric Code and the appropriate local electrical codes.

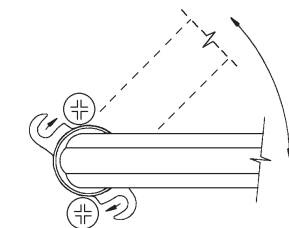




**20** Connect arm wires using plug-in connectors. See detailed illustration.



**21** Push wires into hole and attach arm to washer by rotating arm into place. Lock down by tightening screws into flange. See detailed illustration.



**22** Install bobèche on every arm and screw bulbs into all sockets. Connect power and test fixture before trimming. If any of the bulbs do NOT light - DISCONNECT POWER. Double check the wire connections.

