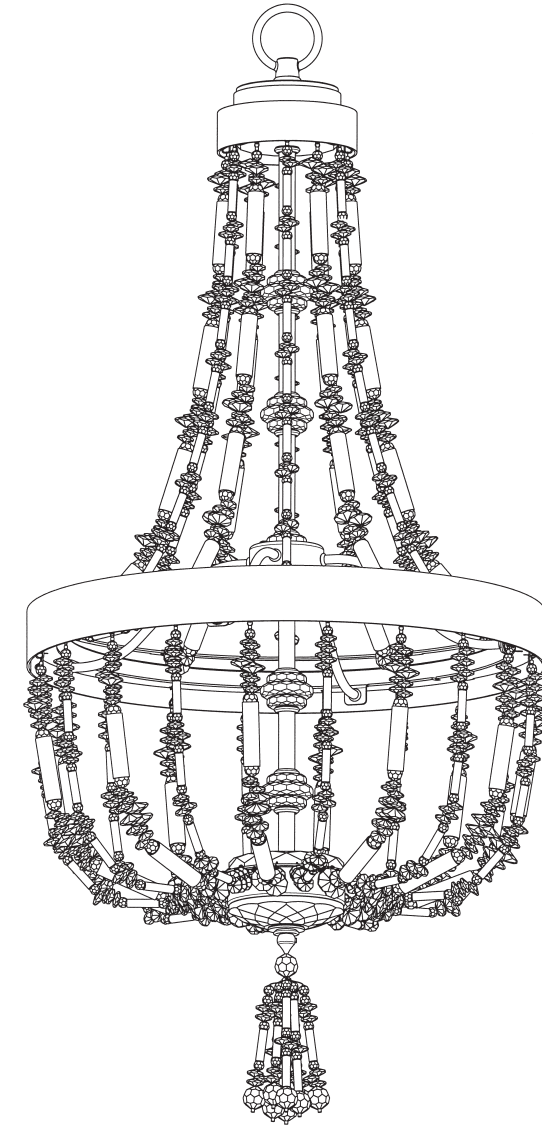


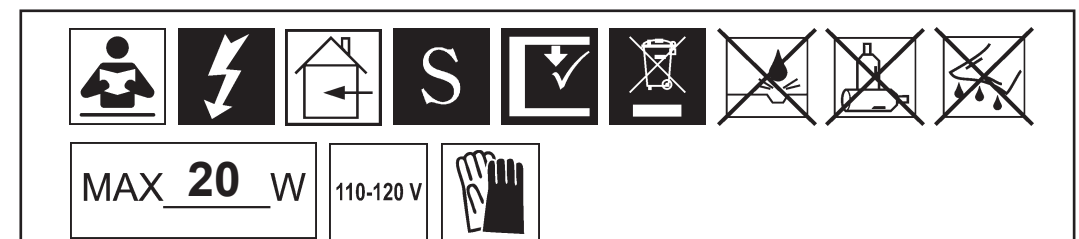
SCHONBEK
*Signature*TM

BALI
S2816-__ __O

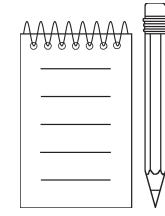
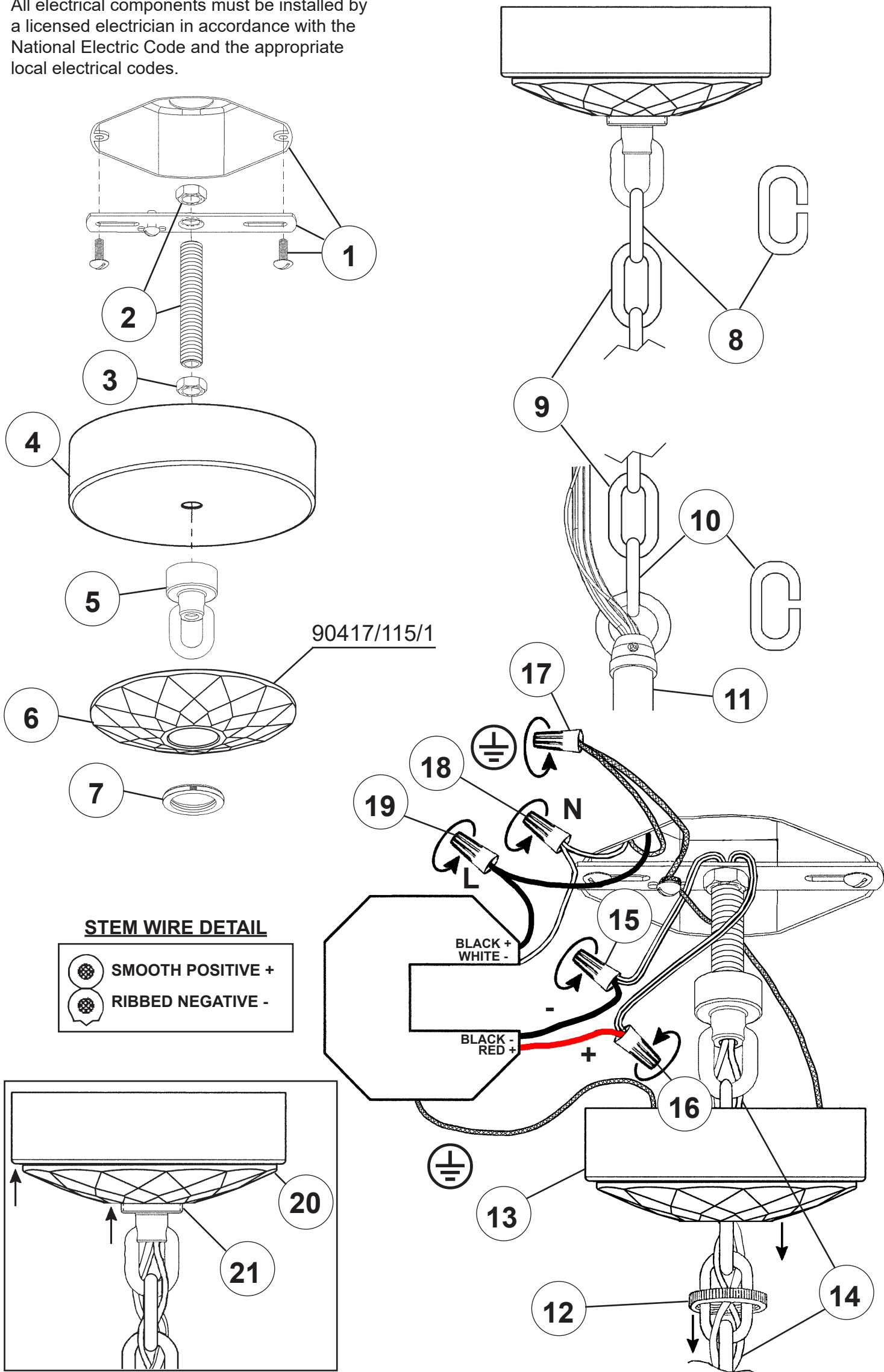


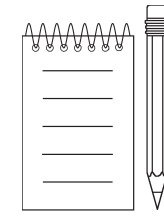
THIS DESIGN IS THE PROPRIETARY
TRADE DRESS/TRADEMARK OF
W SCHONBEK LLC.

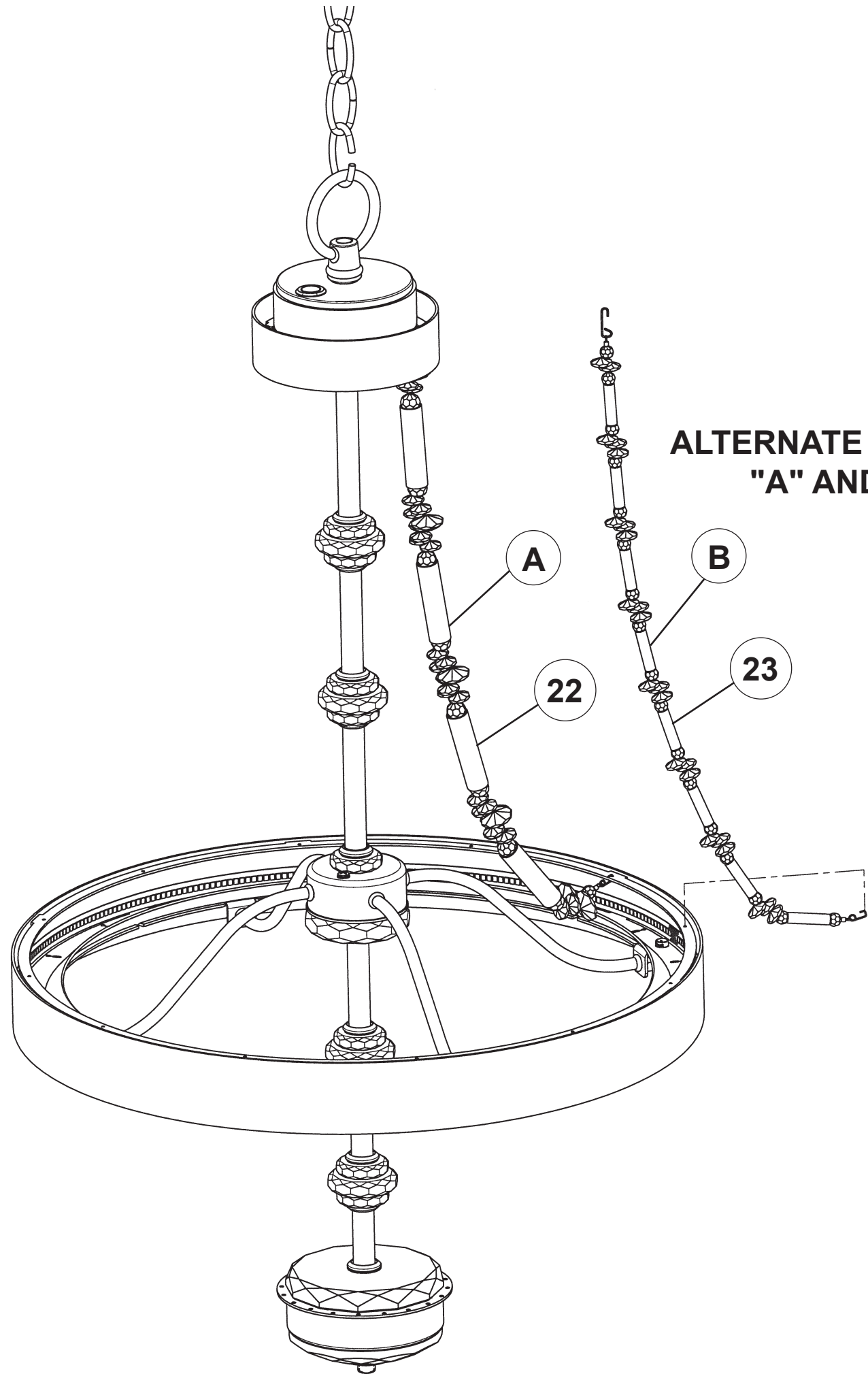
SCHONBEK
*Signature*TM



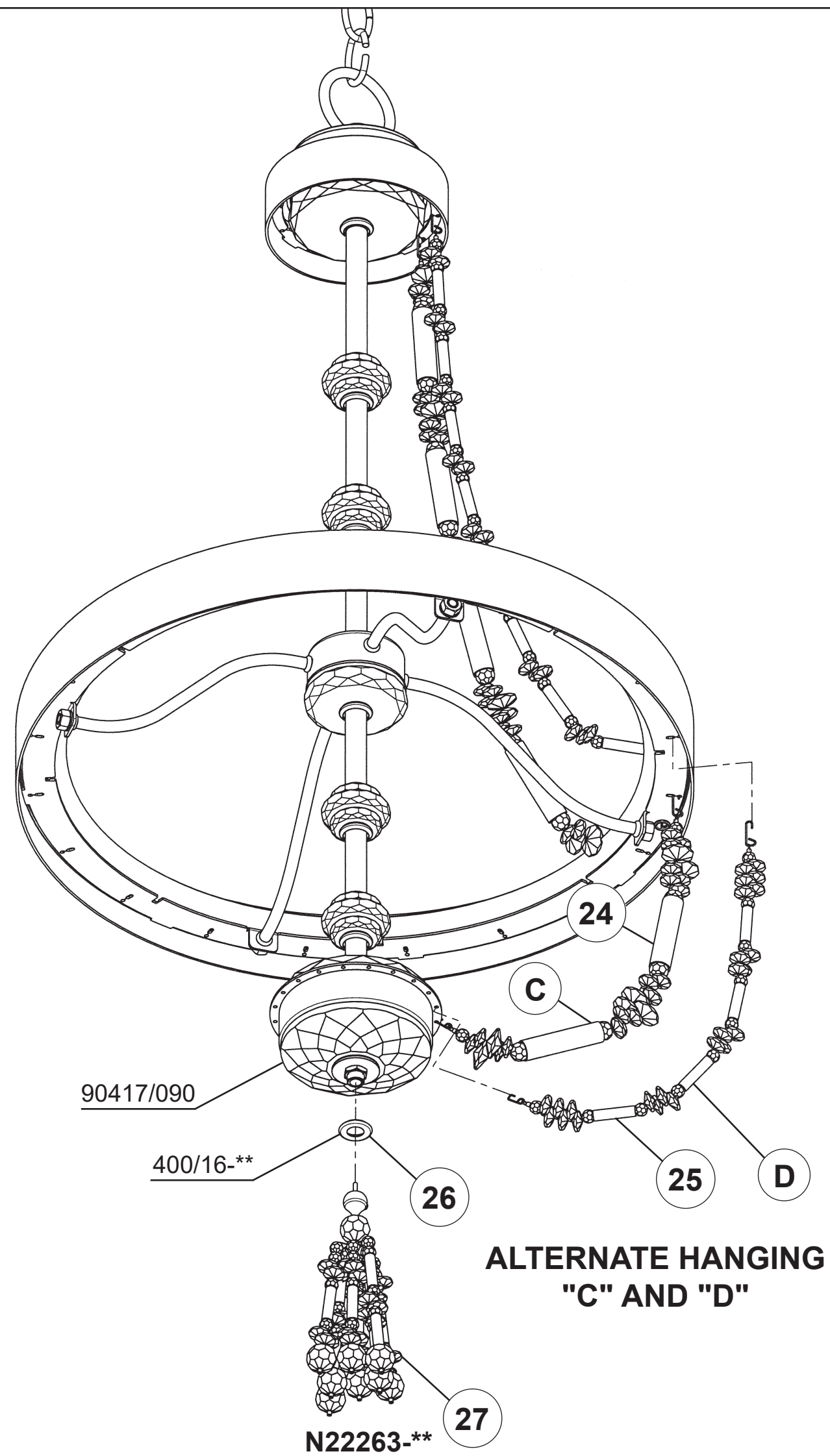
All electrical components must be installed by a licensed electrician in accordance with the National Electric Code and the appropriate local electrical codes.







**ALTERNATE HANGING
"A" AND "B"**



**ALTERNATE HANGING
"C" AND "D"**